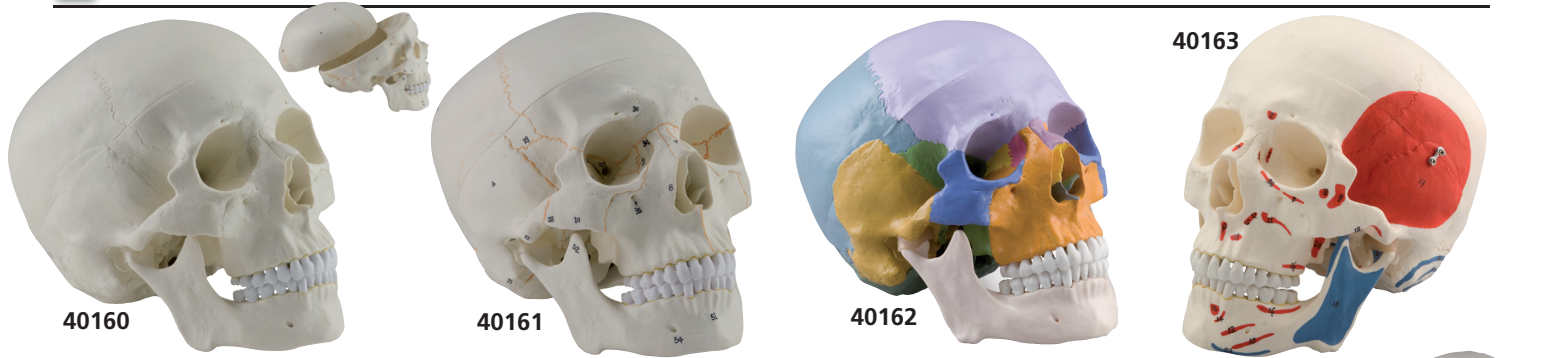


## HUMAN SKULLS - 3 PARTS



### Numbered skull (40161)

Significant structures are numerated

### Coloured skull (40162)

All the bones are depicted in different colours, making this model a useful tool to study the correct position and relationship of all the structures.

### Muscular skull (40163)

The left side of the skull shows the points of origin (red) and the point of insertion (blue) of the muscles.

### MINI SKULL (40165) ½ adult natural size

It depicts all structural details of the skull.

It can be disassembled into skullcap and base of skull.

Articulated mandible.

Life size human skull reproduction with all details, made in PVC. Removable skull cap and articulated mandible.

40165

GIMA code	HUMAN SKULLS	Size cm	Weight g	Magnif.
40160	HUMAN SKULL	22x14x16	950	1X
40161	HUMAN SKULL - numerated	22x14x16	950	1X
40162	HUMAN SKULL - coloured	19.5x17x21.5	950	1X
40163	HUMAN SKULL - muscular	18x17x21	875	1X
40165	MINI SKULL	11x11x16.5	150	0.5X

## DENTAL MODELS

### • 40206 DECIDUOUS TEETH

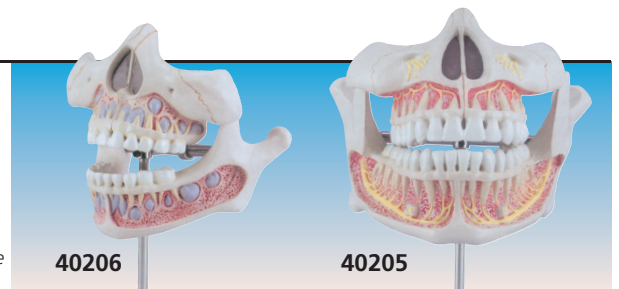
Size: 9x9x10 cm - weight: 85 g. Mounted on base with stand.

This life size model shows the upper and lower jaw of a 5 year old child. The lower jaw is movable to reproduce the natural chew. The model exposes the arrangement of the young teeth.

### • 40205 PERMANENT TEETH

Size: 11x11x12 cm - weight: 170 g. Mounted on base with stand.

This life size model shows the upper and lower jaw of an adult. The lower jaw is movable to reproduce the natural chew. The model exposes the complete set of permanent teeth with roots and nerves fibres.



### • 40210 LOWER JAW

Size: 35x18x31 cm - weight: 1130 g  
Mounted on base with stand.

This 3X life size model is divisible into 6 parts to show all the characteristics of an adult half mandible. A portion of the jaw can be removed to show the roots of the teeth and the internal structure of the bone. Canine and molar teeth can be removed and dissected longitudinally to observe the tooth roots, pulp and nerves.

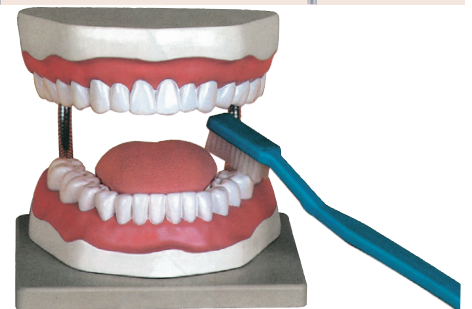


### • 40212 DENTAL PATHOLOGY MODEL

Size: 6x4.5x11 cm - weight: approx. 100 g

This 4X life size model shows the process of dental caries in its progressive stages.

The tissues forming the tooth (enamel, dentine and pulp) are shown, along with the way in which they are affected by the caries process.



### • 40200 ORAL HYGIENE

Size: 12x16x22 cm - weight: 1 kg  
Mounted on base.

A 3X life size model useful to teach the correct way to brush teeth. A giant toothbrush is included.



### • 40213 SET 3 TEETH: INCISOR, CANINE, MOLAR

Size: 33x33x11 cm - weight: 700 g

5-part model includes representations (10X life size) of human incisor, canine and molar teeth. The canine and molar can be divided into 2 parts each, showing internal features (dentine, enamel, cement and pulp).

### • 40214 LOWER MOLAR WITH CARIES

Size: 11x11x19.5 cm - weight: approx. 250 g  
Mounted on base with stand.

This 1-piece model is approximately 10X life size; it shows the most important dental pathologies, including dental caries, pulpitis, gingivitis and periapical periodontitis.



### • 40211 DENTAL CARIES

Size: 12x6x6 cm - weight: approx. 300 g

This model, composed of 7 parts, is 4X life size. It consists of 3 teeth, seated in their sockets, showing the progressive deterioration of tooth structure by dental caries. The first tooth shows the caries in the enamel. In the second tooth, the caries spreads through the dentine. In the third tooth, the pathology affects the pulp, jeopardizing the vitality of the tooth.